

Vermeer®

Hydrostatic Trencher

T1255



COMMANDER

COMMANDER®

T1255

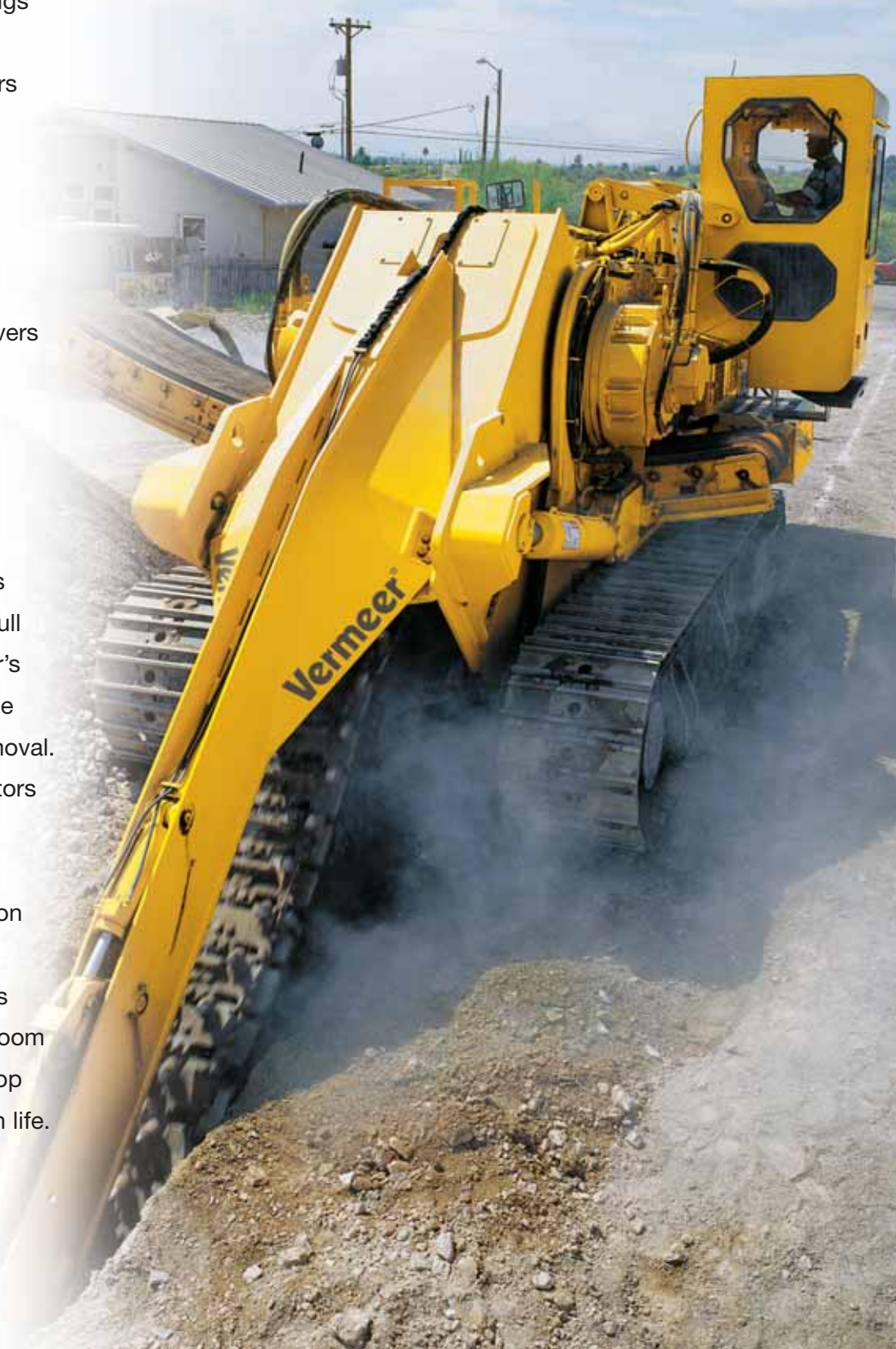
Toughness Meets Technology

This heavy-duty Vermeer® T1255 COMMANDER® 3 rock trencher digs through solid rock to install large-diameter pipe for contractors working in the energy pipeline business or in deep sewer and water applications.

A Caterpillar C18 ACERT Tier 3 engine with 600 hp (447 kW) delivers the muscle needed for digging in rock, trenching cross-country, or working drainage and utility projects on roadways.

The T1255 rock trencher provides dual-path hydrostatic drive with full counter rotation, and the trencher's 36" (91 cm) wide conveyor is large enough for high-volume spoil removal. Dual Rotary Power headshaft motors and a splined headshaft produce lower speed and higher torque, delivering superior rock penetration and low chain wear for better production results. It also features high alloy, easy-access bottom boom wear strips, and optional boom-top rollers for increased digging chain life.

Rock-Solid Performance



Hydrostatic Trencher



Dual Rotary Power headshaft motors and a splined headshaft produce lower speed and higher torque, giving you superior rock penetration and low chain wear for better production results.



A 600 hp (447 kW) Caterpillar Tier 3 engine delivers the power needed to triumph over tough rock-trenching projects.



The TEC 2000.2® Electronic Control System monitors operating conditions, measures full-range ground speed and headshaft speed, and informs the operator of real-time machine performance to help increase productivity and reduce machine wear.

T1255 COMMANDER 3 Specifications

Transport Dimensions

Approach angle: 15°
Height: 146" (370.8 cm)
Length: 350" – 703" (889 cm – 1786 cm)
Weight range: 148,000 lb – 245,000 lb
(67,131 kg – 111,130 kg)
Width: 134" – 144" (340 cm – 366 cm)

Engine

Make and model: Caterpillar C18 ACERT Tier 3
Gross horsepower: 600 hp (447 kW)
Rated engine rpm: 2100
Number of cylinders: 6
Fuel tank capacity: 370 gal (1400 L)
Operating range: 11.6 hr
Fuel consumption @ full load:
31.8 gph (120.4 L/h)
Max engine operating angle: 45°
Air cleaner: Dry-type exhaust-aspirated
Aspiration: Turbocharged and air-to-air aftercooled (ATAAC)
Cooling medium: Liquid
Electrical system: 24 V DC
Oil filter: Full-flow

Tracks

Ground pressure: Trencher 16.4 psi (113 kPa)
Terrain leveler 21.7 psi (149 kPa)
Tilt track available: No
Tilt track max angle: N/A
Track drive type: Dual-path hydrostatic w/ planetary transmission
Track length: 176" (447 cm)
Track pad type: Double grouser w/ dirt relief, single grouser
Track pad width: 30" (76 cm)
Track size: Cat 375 Excavator
Travel speed max (high range): 110 fpm (33.5 m/min)
Travel speed max (low range): 41 fpm (12.5 m/min)
Parking and emergency brake:
Spring-applied, hydraulic release, wet disc brake
Service brakes: Hydrostatic

Conveyor

Belt width: 36" (91.4 cm)
Conveyor belt speed range: 0 – 814 fpm (0 – 248 m/min)
Conveyor belt style: Fingered
Conveyor length: 180" or 240" (457 cm or 610 cm)
Conveyor shift available: Yes
Conveyor shift distance: 65" or 125" (165 cm or 318 cm)
Conveyor style: Curved
Discharge direction: Right or left
Discharge height range: 74" – 103" (188 cm – 262 cm)

Cab

Air conditioner / heater: Standard
Air suspension seat: Standard
AM / FM stereo w/ weather band: Optional
Elevating: Yes
Pressurized / filtered air: Standard
Roll Over Module (ROM): Yes

Hydraulic System

Oil tank capacity: 210 gal (795 L)
Oil type: Vermeer HyPower 68 or Vermeer HyPower 100
Pressure setting: 2500 psi (172.4 bar)
Pump flow max: 26 gpm (98.4 L/min)
Type: Pressure and flow compensated (load sensing)

Trencher Attachment

Boom depth options:
8', 10', 12', 14', 16', 18'
(2.4 m, 3 m, 3.7 m, 4.3 m, 4.9 m, 5.5 m)
Boom top rollers: Optional
Chain speed range: 262 – 571 fpm (80 – 174 m/min)
Cutting width range: 30" – 48" (76 cm – 122 cm)
Digging chain size: 5501 double or D7 double
Idler diameter: 50" (127 cm)
Offset range – left of center: N/A
Offset range – right of center: N/A
Trencher drive type: 4 pumps and 2 motors hydrostatic

Terrain Leveler™ Attachment

Weight of terrain leveler attachment:
95,000 lb (43,091 kg)
Left / right tilt: +/- 5° or +/- 6" (+/- 15 cm)
Max cutting depth: 27" (69 cm)
Cutting width: 144" (366 cm)
Drum speed (low): 281 – 401 fpm (86 – 122 m/min)
Drum speed (high): 411 – 587 fpm (125 – 179 m/min)
Laser acceptable: Yes
Digging chain size: 5501 or D8N
Drive type: 4 pumps and 2 motors hydrostatic



Your Complete Global Service Provider for Quality Parts and Service



Get the parts and service edge. In addition to providing quality equipment, Vermeer delivers top-quality parts and superior services. Vermeer parts are manufactured to exacting specifications to help keep your Vermeer equipment running trouble-free and at OEM specifications.



Vermeer offers factory-certified training programs to its dealer network to ensure that the most current service procedures are presented to the service personnel of your Vermeer dealer.



Standard Warranty / Vantage Track / Vantage Track II. Vermeer has confidence in its track trenchers. That's why Vermeer offers a 1-year / 1,000-hour standard limited warranty on the T1255.

Vantage Track offers a 3-year / 3,000-hour Extended-Care Service Program for the components of the closed-loop hydrostatic systems.

Vantage Track II offers a 5-year / 5,000-hour Extended-Care Service Program for the components of the closed-loop hydrostatic systems.



Vermeer Manufacturing Company

1210 Vermeer Road East

P.O. Box 200

Pella, Iowa 50219 U.S.A.

Phone: (641) 628-3141

Fax: (641) 621-7773

International fax: +1 (641) 621-7730

www.vermeer.com

Call toll-free 1-888-VERMEER

1-888-837-6337 (U.S.A. only)

Europe, Middle East, and Africa:

P.O. Box 323

4460 AS Goes

Netherlands

Phone: +31 113 272700

Fax: +31 113 272727

Equipment shown is for illustrative purposes only and may display optional accessories or components. Please contact your local Vermeer dealer for more information about machine specifications. Vermeer Manufacturing Company reserves the right to make changes in engineering, design, and specifications; add improvements; or discontinue manufacturing at any time without notice or obligation. VERMEER, the VERMEER LOGO, COMMANDER, TERRAIN LEVELER, and TEC 2000.2 are trademarks of Vermeer Manufacturing Company in the U.S. and / or other countries.

CAT is a trademark of Caterpillar, Inc. ROTARY POWER is a trademark of Rotary Power, Inc.

© 2007 Vermeer Manufacturing Company. All Rights Reserved